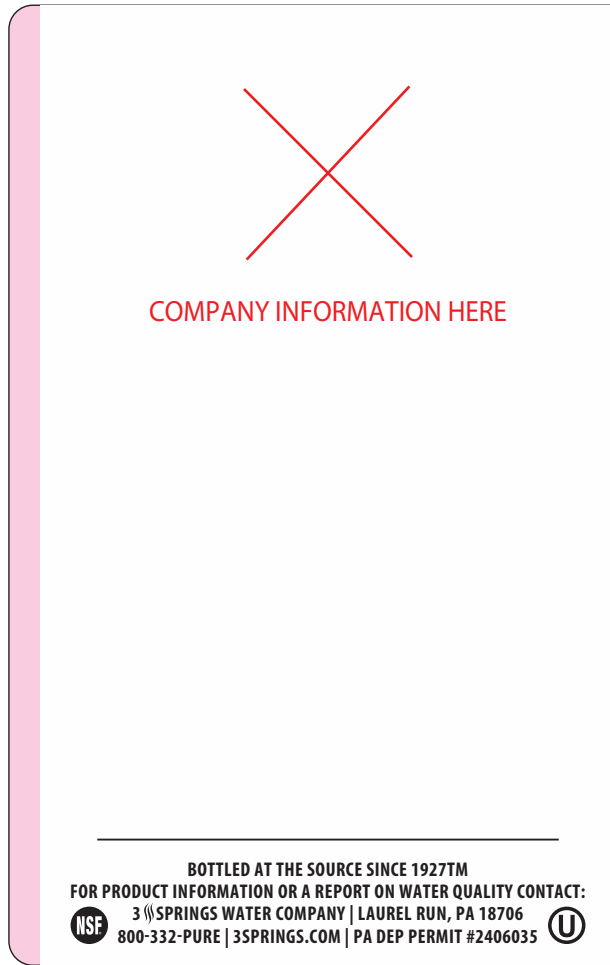


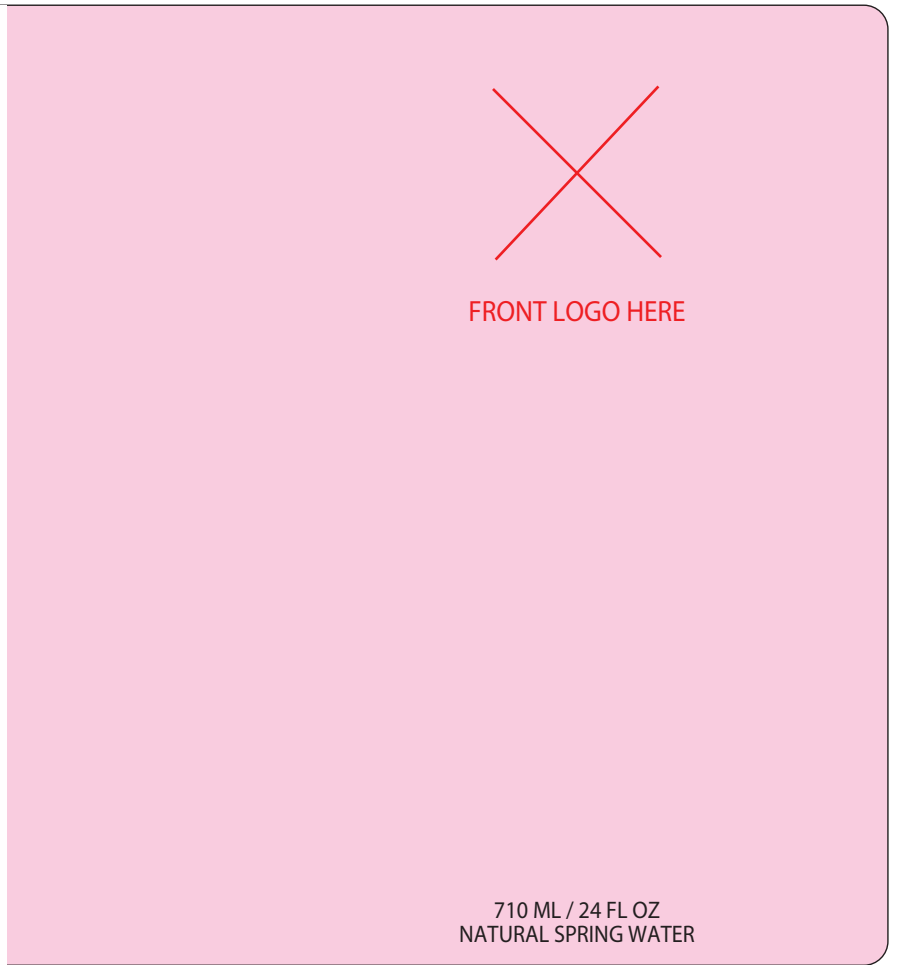
**PINK = CLEAR**  
Pink represents clear label material.



BACK OF LABEL



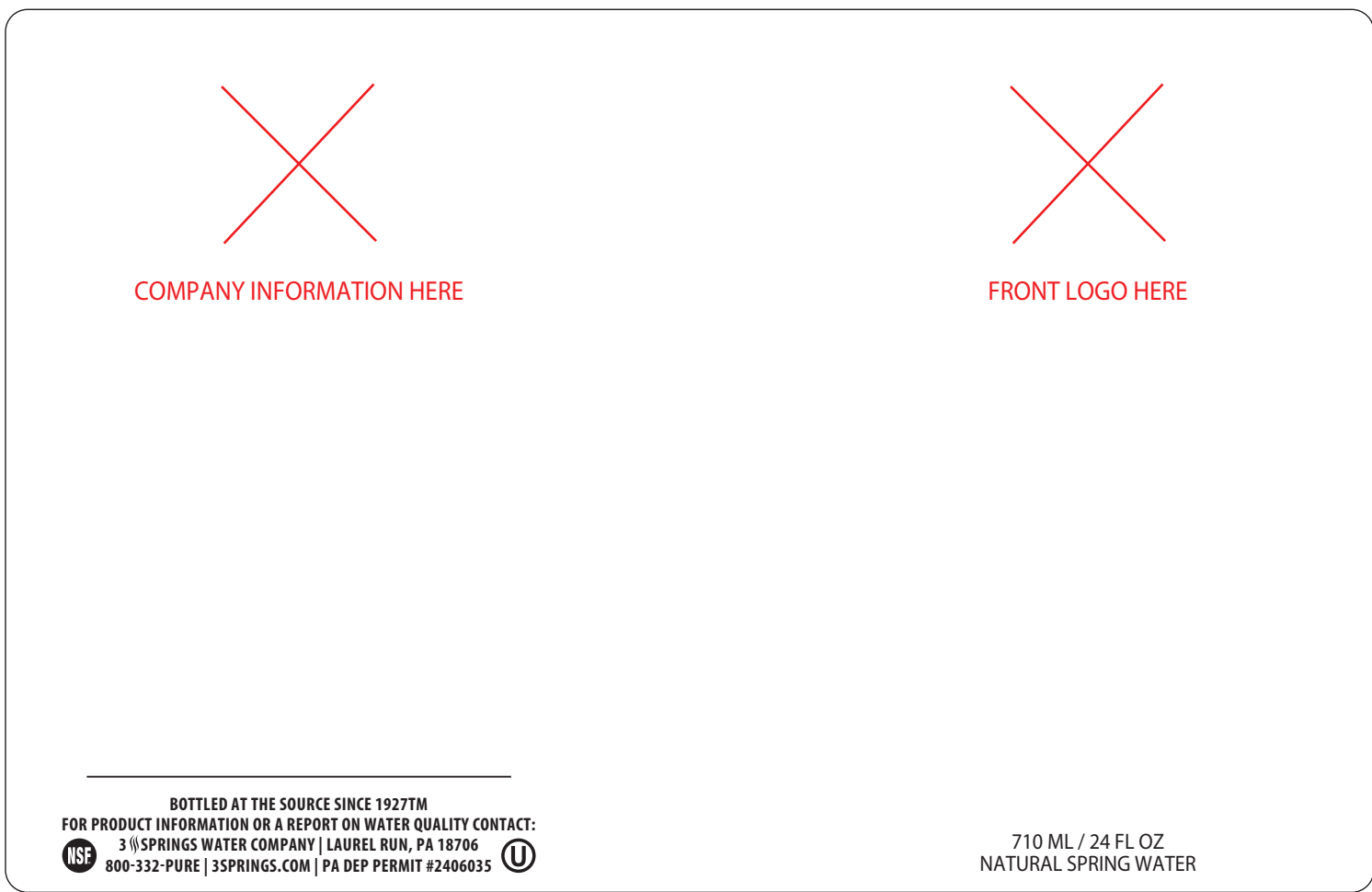
FRONT OF LABEL



4.4688 in in from center of back panel to center of front logo to create a 360 degree 3D wrap effect

**SEMIGLOSS**

BACK OF LABEL



FRONT OF LABEL

4.4688 in in from center of back panel to center of front logo to create a 360 degree wrap effect

**Artwork Submission Guidelines**

We want to ensure that the digital art files you provide meet your expectations when printed. Labels are printed on flexographic presses; therefore some effects are best avoided. The following guidelines are provided to assist you. Please read them carefully. If you have any questions, call us at 1-877-664-1500.

Digital art files must comply with the following instructions:

**FORMATS:**

Adobe illustrator (CC) is preferred to avoid additional production charges. We also accept original layered Photoshop files (PSD). The low resolution (72 dpi) files extracted from the Internet cannot be accepted. Multiple color line art images should be created with a vector based drawing program (such as Illustrator).

**COLOR:**

All color must be converted to CMYK or PMS (no RGB).

Pantone colors give the best results. Gradients may be used, however, our printing process does not allow for screens to fade to 0 percent. All gradient screens should be made to the minimum of 3 percent.

-Trapping: Do not create any traps; we will do it for you.  
-Bleeds: 1/8"

**SCANNED IMAGES:**

All image scans must be at least 300 dpi at 100 percent (actual size). Files below 300 dpi will not be accepted. Do not change the resolution from a lower resolution to 300 dpi without rescanning the image—this will result in a low-quality print. All color scans must be in CMYK and should be saved as .jpg or .tiff files (.jpg with maximum quality should be ok). Once an image is placed in the document, do not change the file name.

**Typography:**

All fonts must be provided separately or outlines created in Illustrator for minimum text. Avoid using thin rules or

typefaces in reverse areas, we suggest a 5 pt. minimum, and not smaller than a 1 pt. rule.

**PROOFS:**

Please provide a color proof for 4-color process labels or a black and white proof for other labels. Every effort will be made to match color for 4-color process labels, however, we cannot guarantee an exact color match. We will give our best effort to match PMS spot colors, however, there may be potential variances.

**EMAIL TRANSMISSIONS:**

We can accept your digital art files via email or a cloud based file share site (such as Dropbox). Send email transmissions to: artwork@privatespringwater.com

Please provide a contact name and phone number in case we experience any problems.

First Label Proof* . . . . .	Included	Each Additional Proof . . . . .	Billed Hourly
Hourly Art Rate . . . . .	\$150.00 per hour (1hr. min.)	Plates Per Color . . . . .	\$50.00 per color
Each Press Proof . . . . .	\$300.00 (1-4 colors) \$500.00 (5-9 colors)	Mock-Up's . . . . .	\$30.00 + Shipping (G)

Camera ready artwork required per the bottle specifications. First label proof is included and all additional artwork requirements will be invoiced at our hourly rate.  
\*Special circumstances may require us to bill for art time on the first proof if the artwork provided requires time beyond our normal scope.